

Ashford 1





North Waterfront

An exciting new destination for Belarus

The North Waterfront development is a bold new vision for a waterfront community in the heart of the capital that looks to the future whilst drawing inspiration from the neighborhood's rich history.

We have diverted the status quo towards prioritizing residents' well-being and experiences, focusing on the importance of quality amenities and resident's lifestyles by bringing the most incredible designers and architects to deliver world-class communities.

35

mins
From the
Airport

25

mins
From the
City Center

1

mins
From the
Ring Road

15

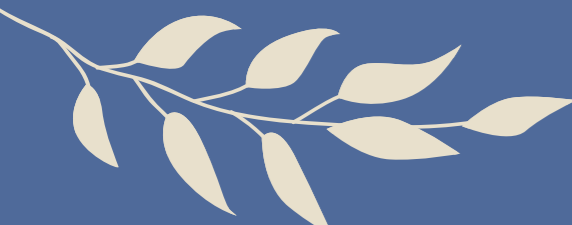
mins
From the
National Library

30

mins
From the
Railway Station

10

mins
From the
Sports Palace





Exhibition Center



Parks



Ice Rink



Schools



Kid's Play Areas



Dog Parks



Cycling Track



Kindergartens



IT University



Supermarkets



Fishing Pier



Medical Centers

Lakeside Park

Residents of North Waterfront will be able to enjoy the modern and healthy environment created by the Lakeside Park.

The park offers a wonderful atmosphere perfect for relaxing and socializing amidst a captivating blend of natural beauty and immersive attractions.



Green Parks



Art SCULPTURES



Amphitheater



Sports Areas



Fishing Pier



Urban Beach



Cycling Track



Jogging Trail



Barbecue Areas



Picnic Areas



Kid's Play Area



Cafes





Neighbourhood Square

Redefining lifestyle with an open park catering to the neighborhood, with its bespoke details, curated retail boutiques and avant-garde dining experiences.

This pedestrian friendly space located in the neighboring district will also become a space for entertainment and special events.



Retail



Restaurants & Cafes



Outdoor Events



Ice Rink



Art Sculptures



Park



Kid's Play Area



Picnic Areas





Residential Club

North Waterfront provides a unique experience that combines the benefits of neighborhood living with exclusive amenities and services.

The Residential Club, conveniently situated within a walking distance, offers elegantly styled spaces exclusive to residents, enriching contemporary living with comfort and effortless access to premium amenities.



Cinema



Games Area



Gym



Meeting Rooms



Co-working Area



Event Room



Children's Place



Cafe

Ashford 1





Ashford 1

More than just a home, ASHFORD 1 is the beginning of a new chapter. Set in a peaceful, landscaped neighborhood, this building offers a place where families grow, neighbors connect, and everyday life feels just a bit easier.

In ASHFORD 1 modern architecture meets community spirit – creating a lifestyle rooted in simplicity, warmth, and connection.





A PLACE TO GROW, REST,
AND BELONG



Interiors

From the first step into the lobby to the peaceful corners of your living room, every detail is designed to feel like home.

- Designer lobbies with panoramic glazing & elegant styling
- Elegantly designed hallways
- Dedicated storage for strollers
- Pet paw-washing facilities



HOME BEGINS WITH A FEELING



From cozy one-bedrooms to spacious family layouts, each apartment is designed with comfort, light, and livability in mind.



ST

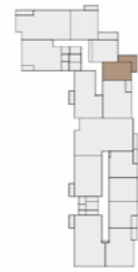
NVW NORTH WATERFRONT

Ashford 1

STUDIO TYPE B

APARTMENT AREA 28.20 m² - 28.35 m²
 BALCONY AREA 9.97 (2.99 m²)-9.99 (3.00 m²)
 NET AREA 28.35 m² - 31.20 m²

KEY PLAN 1-7 FLOORS



1 BR

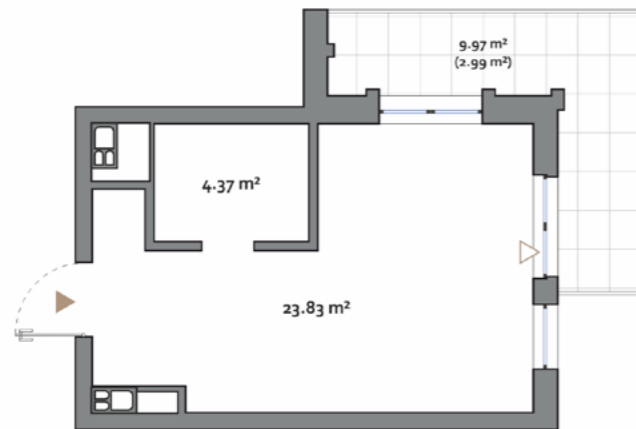
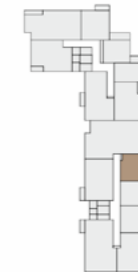
NVW NORTH WATERFRONT

Ashford 1

1 BEDROOM TYPE B

APARTMENT AREA 36.60 m² - 37.83 m²
 BALCONY AREA 4.36 (1.31 m²)-4.58 (1.37 m²)
 NET AREA 37.06 m² - 38.61 m²

KEY PLAN 1-7 FLOORS



Disclaimer

1. All room dimensions are in metric and measured to structural elements and exclude wall finishes and construction tolerances.
2. All dimensions have been provided by our consultant architects.
3. All materials, dimensions, features and amenities are approximate at the time of printing.
4. Actual area may vary from stated area and unit direction may vary from unit to unit. Drawings not to scale. The developer reserves the right to make revisions to the floor plans and any features, materials, dimensions, drawings and amenities mentioned in this brochure without notice.



1 BR

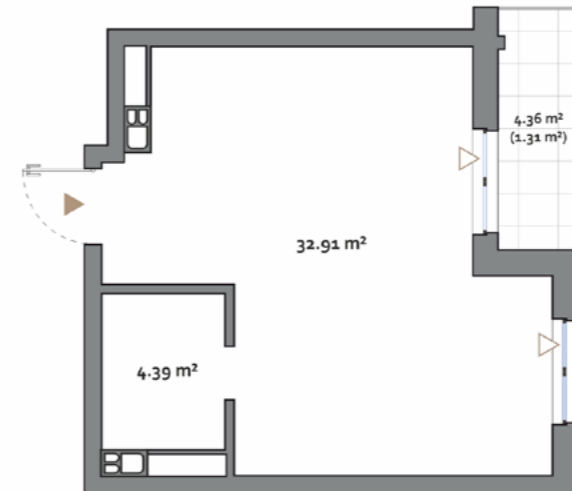
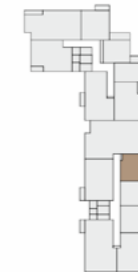
NVW NORTH WATERFRONT

Ashford 1

1 BEDROOM TYPE B

APARTMENT AREA 36.60 m² - 37.83 m²
 BALCONY AREA 4.36 (1.31 m²)-4.58 (1.37 m²)
 NET AREA 37.06 m² - 38.61 m²

KEY PLAN 1-7 FLOORS



Disclaimer

1. All room dimensions are in metric and measured to structural elements and exclude wall finishes and construction tolerances.
2. All dimensions have been provided by our consultant architects.
3. All materials, dimensions, features and amenities are approximate at the time of printing.
4. Actual area may vary from stated area and unit direction may vary from unit to unit. Drawings not to scale. The developer reserves the right to make revisions to the floor plans and any features, materials, dimensions, drawings and amenities mentioned in this brochure without notice.



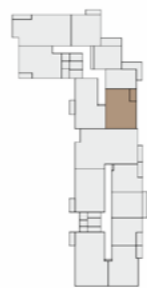
NW NORTH WATERFRONT

Ashford 1

2 BEDROOM TYPE D

APARTMENT AREA.....56.78 m² - 57.58 m²
BALCONY AREA.....4.00 (1.20 m²)
NET AREA.....57.58 m² - 57.98 m²

KEY PLAN 1-7 FLOORS



2 BR

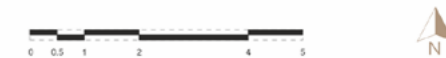
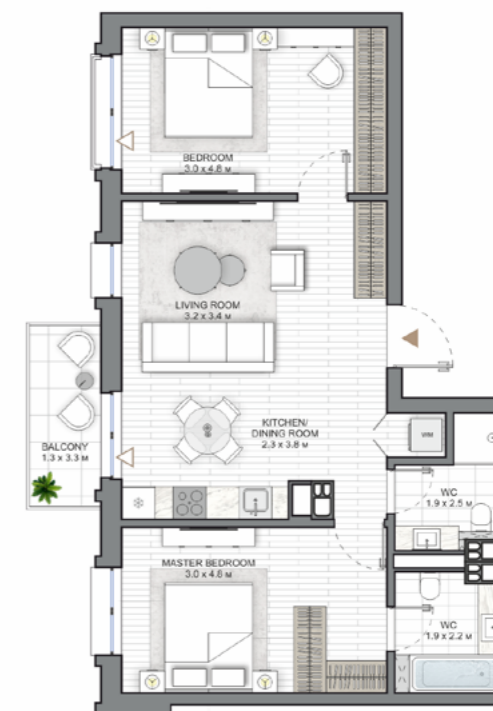
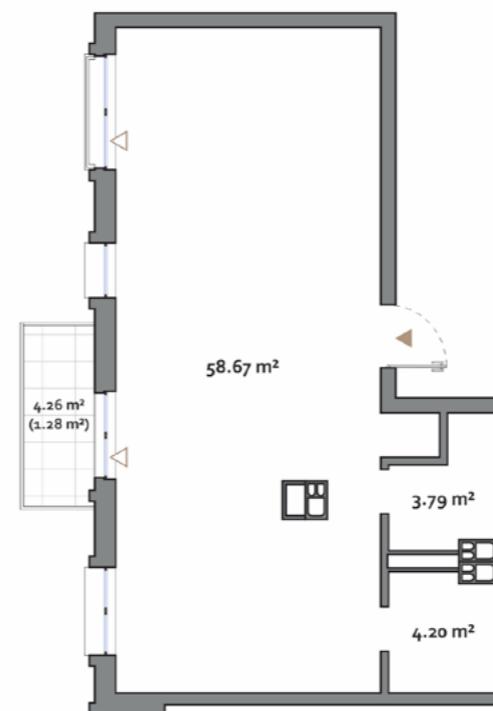
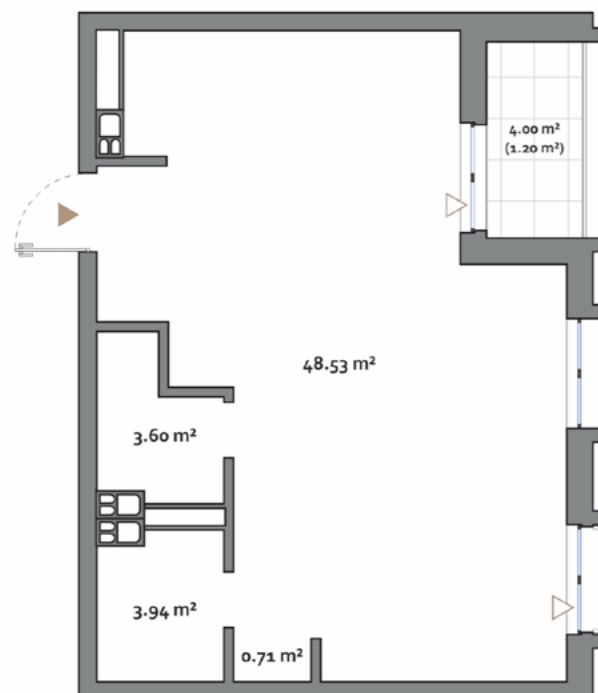
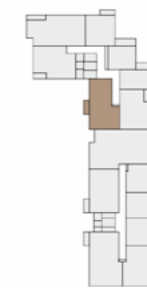
NW NORTH WATERFRONT

Ashford 1

2 BEDROOM TYPE E

APARTMENT AREA.....66.66 m² - 67.19 m²
BALCONY AREA.....4.26 (1.28 m²)-4.27 (1.28 m²)
NET AREA.....67.19 m² - 67.94 m²

KEY PLAN 1-7 FLOORS



Disclaimer

1. All room dimensions are in metric and measured to structural elements and exclude wall finishes and construction tolerances.
2. All dimensions have been provided by our consultant architects.
3. All materials, dimensions, features and amenities are approximate at the time of printing.
4. Actual area may vary from stated area and unit direction may vary from unit to unit. Drawings not to scale. The developer reserves the right to make revisions to the floor plans and any features, materials, dimensions, drawings and amenities mentioned in this brochure without notice.

Disclaimer

1. All room dimensions are in metric and measured to structural elements and exclude wall finishes and construction tolerances.
2. All dimensions have been provided by our consultant architects.
3. All materials, dimensions, features and amenities are approximate at the time of printing.
4. Actual area may vary from stated area and unit direction may vary from unit to unit. Drawings not to scale. The developer reserves the right to make revisions to the floor plans and any features, materials, dimensions, drawings and amenities mentioned in this brochure without notice.



NVW NORTH WATERFRONT

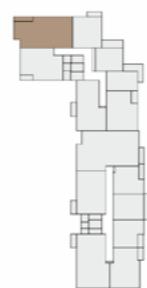
Ashford 1

3 BR

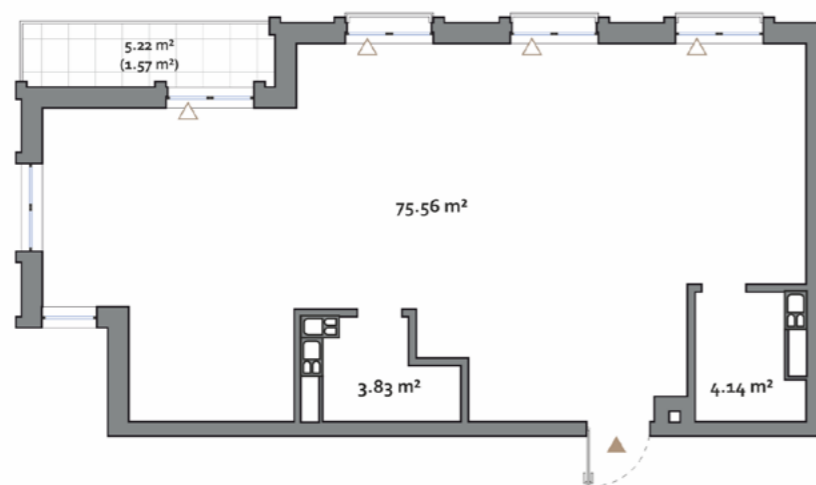
3 BEDROOM
TYPE B

APARTMENT AREA83.53 m²
BALCONY AREA.....5.22 (1.57 m²) - 5.26 (1.58 m²)
NET AREA85.10 m² - 85.11 m²

KEY PLAN 2-7 FLOORS



LAKESIDE PARK



Disclaimer

1. All room dimensions are in metric and measured to structural elements and exclude wall finishes and construction tolerances.
2. All dimensions have been provided by our consultant architects.
3. All materials, dimensions, features and amenities are approximate at the time of printing.
4. Actual area may vary from stated area and unit direction may vary from unit to unit. Drawings not to scale. The developer reserves the right to make revisions to the floor plans and any features, materials, dimensions, drawings and amenities mentioned in this brochure without notice.



NVW NORTH WATERFRONT

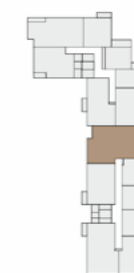
Ashford 1

4 BR

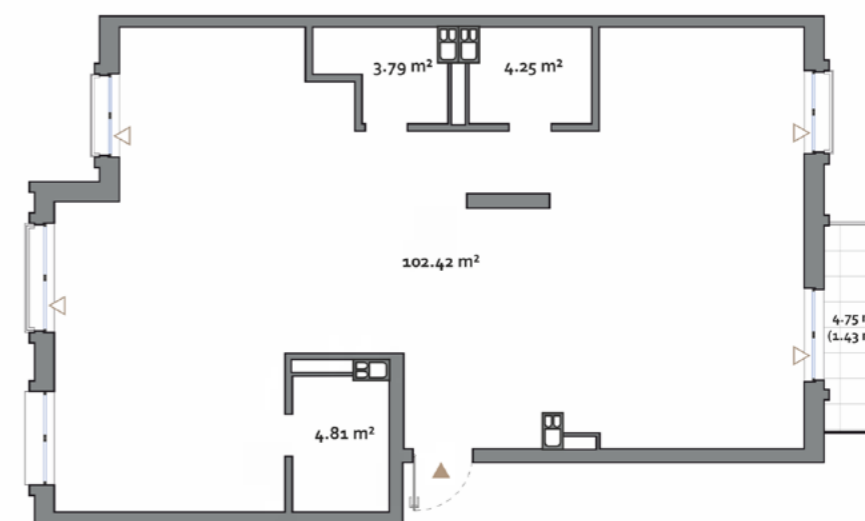
4 BEDROOM
TYPE A

APARTMENT AREA115.27 m² - 116.60 m²
BALCONY AREA.....4.75 (1.43 m²)
NET AREA.....116.60 m² - 116.70 m²

KEY PLAN 1-7 FLOORS



LAKESIDE PARK



Disclaimer

1. All room dimensions are in metric and measured to structural elements and exclude wall finishes and construction tolerances.
2. All dimensions have been provided by our consultant architects.
3. All materials, dimensions, features and amenities are approximate at the time of printing.
4. Actual area may vary from stated area and unit direction may vary from unit to unit. Drawings not to scale. The developer reserves the right to make revisions to the floor plans and any features, materials, dimensions, drawings and amenities mentioned in this brochure without notice.

Ashford 1

NORTHWATERFRONT.BY



International number: +375 17 311-6888

Toll-free number: 8-801-100-3888

North Waterfront Sales Center,
Sverdlova str. 11, Minsk
Tsvirko str. 78, Minsk

NW NORTH
WATERFRONT

