



RIGA WATERFRONT
LATVIA

Courtyard
RESIDENCES



The visionary

Under Mohamed Ali Alabbar's leadership, Eagle Hills creates iconic, innovative developments revered across global markets. They are best known for being meticulously planned master communities designed by the most incredible designers and architects. From Croatia to Ethiopia, and from Oman to Morocco, Mr. Alabbar's vision has brought world-class urban landscapes to life, and the lineup keeps expanding with new pinnacles of luxury living.



About Riga

Riga Waterfront City is located in Riga, the capital of Latvia. This city is a center of culture and history. Established in 1201, it boasts a remarkably well-preserved medieval Old Town, a UNESCO World Heritage Site. This area showcases a unique blend of architectural styles, from the grandeur of its ancient churches to the intricate details of its Art Nouveau buildings. Riga offers a sophisticated urban experience with a wealth of museums, concert halls, and a vibrant atmosphere. Its pedestrian-only squares, teeming with shops, restaurants, and nightlife, further consolidate Riga's position as a captivating Baltic gem.





The new center of Europe

Located in an old industrial site in the historical docklands area of Andrejsala Island and the adjacent Eksporta Basin in Riga. It envisions a vibrant, modern, and sustainable waterfront district, integrating residential, commercial, cultural, and leisure spaces. The site is in a prime Daugava riverfront location. There are 55 hectares of real estate that can revitalize the city, provide more residential spaces, help to slow down the hot real estate market and boost the economy.

With direct access to Riga City via Eksporta street, a tram line along Andrejosta Street and the ferry terminal's planned renovation and expansion all offer great connectivity to the city center.

The site is marked by relics of industrial times and offers a 5-kilometre-long river front, on which people will live and enjoy the view of Riga and the Kīpsala Island. With the Riga Power Station Retail Hub at the heart of the development, a unique and nostalgic retail and gastronomy destination is created.



Embracing history, shaping the future

Riga Waterfront isn't just another development project; it's a journey through time, where the rich tapestry of history seamlessly intertwines with the vibrancy of modern living. At Riga Waterfront, we envision a dynamic urban landscape where the echoes of history resonate with the vibrancy of modern life. Our vision is to create a thriving community that celebrates its rich heritage while embracing innovation and sustainability. By blending the charm of the past with the promise of tomorrow, Riga Waterfront aims to inspire generations to come and leave legacy of resilience, creativity, and community.

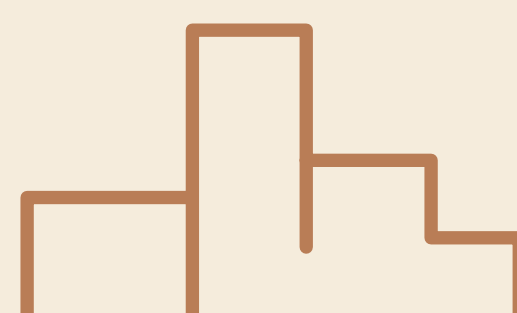


Facts & figures

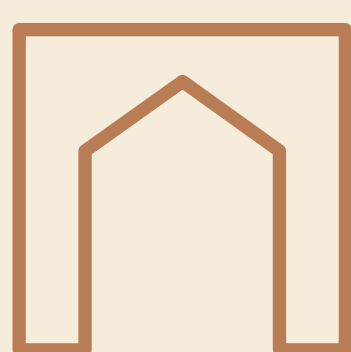
Long riverfront



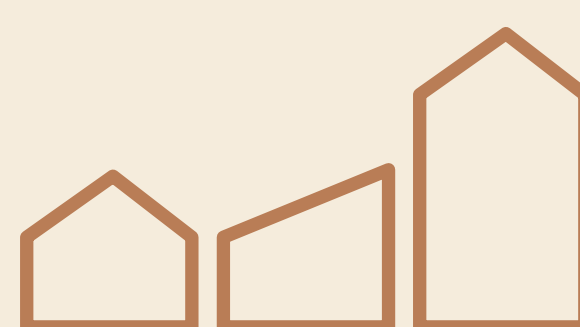
Around 50 ha of prime real estate area



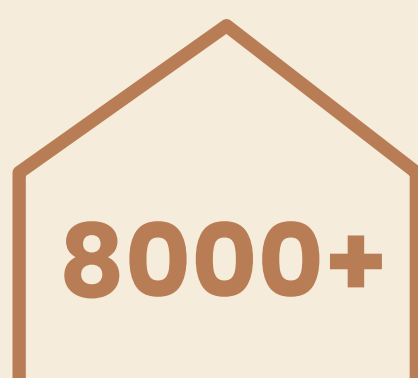
Near former Riga Gateway



Neighborhoods with distinctive characters



Residential units



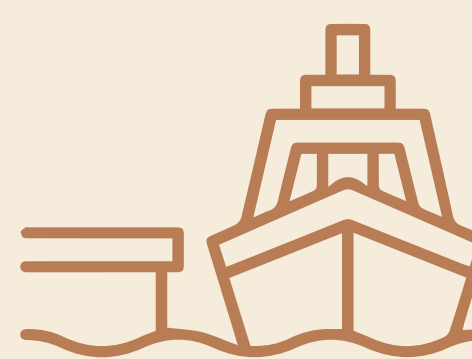
Grade A office spaces



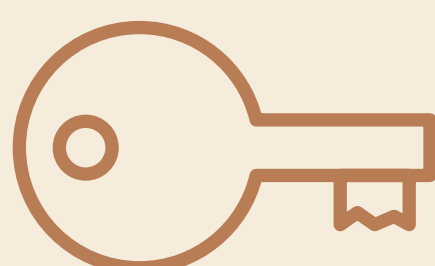
Prime retail spaces and services



Yacht marinas and cruise terminals



Premium hospitality offering up to 1,000 keys



Direct connection to the city center





The masterplan

With Eksporta Street serving as the backbone uniting the site, Riga Waterfront links seven distinct identities whose harmonization to creates a dynamic array of experiences. Each segment contributes its own character, providing a rhythmic journey for those traversing the area.

From the vibrant energy of Marina Village, nestled near the historic city center, to the serene ambiance of Innovation Harbor, where office spaces blend seamlessly with lush greenery, Riga Waterfront offers a myriad of experiences for both the public and its residents. Whether for residing, working, or relaxing, this thoroughly re-imagined part of Riga beckons with a diverse array of opportunities waiting to be explored and savored.





Riga SoHo

Under Mohamed Ali Alabbar's leadership, Eagle Hills creates iconic, innovative developments revered across global markets. They are best known for being meticulously planned master communities designed by the most incredible designers and architects. From Croatia to Ethiopia, and from Oman to Morocco, Mr. Alabbar's vision has brought world-class urban landscapes to life, and the lineup keeps expanding with new pinnacles of luxury living.

Courtyard

RESIDENCES



Situated at the main entrance of the development, Courtyard residences boast unparalleled proximity to the marina and stunning river vistas.

The 5th floor and the floors above offer breathtaking extended panoramas, while some residences directly overlook the vibrant heart of the development – the Power Station, a future hub for retail experiences.

An innovative design element, a stunning 55-meter-long and 16-meter-wide green internal courtyard, promises a tranquil and refreshing atmosphere within the residences.

Courtyard

RESIDENCES



Courtyard

RESIDENCES

About the project

LIVE BRIGHTLY IN A THOUGHTFULLY DESIGNED SPACE

This building offers a variety of apartments, from 1 to 3 bedrooms all with an open layout living-room meticulously crafted to maximize usable space.

CONVENIENCE AT YOUR DOORSTEP

With commercial retail located on the ground floor, you'll have easy access to shops and services right where you live.

PARK WITH EASE

Enjoy the convenience of basement-level car parking with designated spaces.

STEP INTO A WARM WELCOME

Elegantly designed Lift lobbies that welcome you into your residence.

EMBRACE THE OUTDOORS

Step out onto your private balcony and enjoy the Baltic air and the tranquility of the garden courtyard.

Courtyard

RESIDENCES



LIVE LIFE TO THE FULLEST

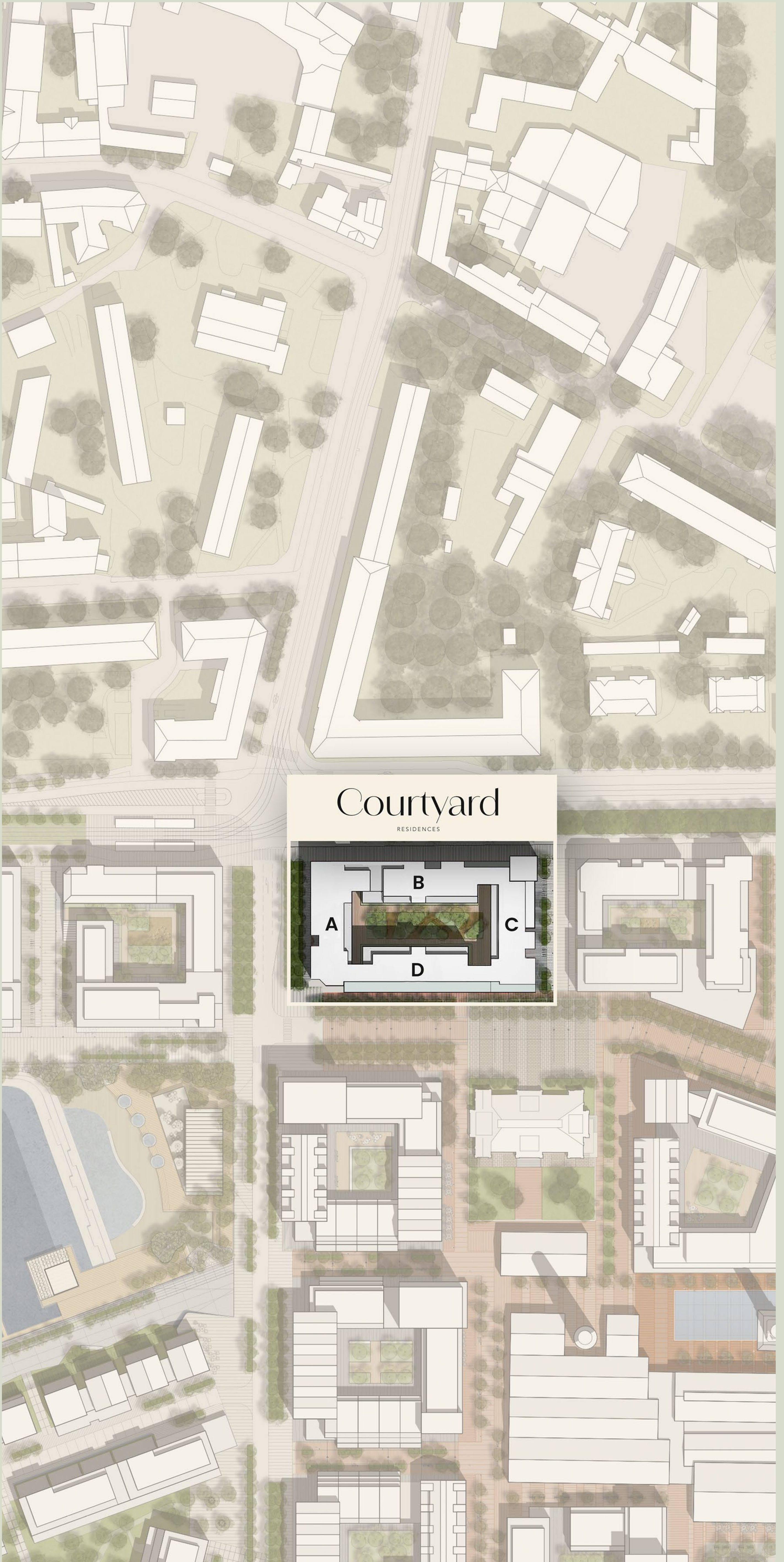
Experience direct connectivity to Riga city center surrounded by lush greenery.

MODERN LIVING

The apartments have 2.85 meters high ceilings, creating a spacious and airy feel. Fully finished interiors with bathrooms and toilets, and with a full plumbing and heating solution.

Courtyard

RESIDENCES



Courtyard

RESIDENCES



Interior

A refined and luxurious atmosphere is experienced from the very first moments at the Courtyard residence. A warm and elegant pastel color scheme with enchanting design bringing glamor and simplicity to the overall ambience.

- Designer lobbies with panoramic glazing & elegant styling
- Elegantly designed hallways
- Dedicated storage for strollers

The Courtyard residence common areas are designed to impress, offering a seamless blend of style and functionality.

Building Layout

Floor - 2, 3, 4 & 5



-  1 BEDROOM
-  2 BEDROOM
-  3 BEDROOM



Building Layout

Floor - 6



-  1 BEDROOM
-  2 BEDROOM
-  3 BEDROOM





Building Layout

Floor - 7



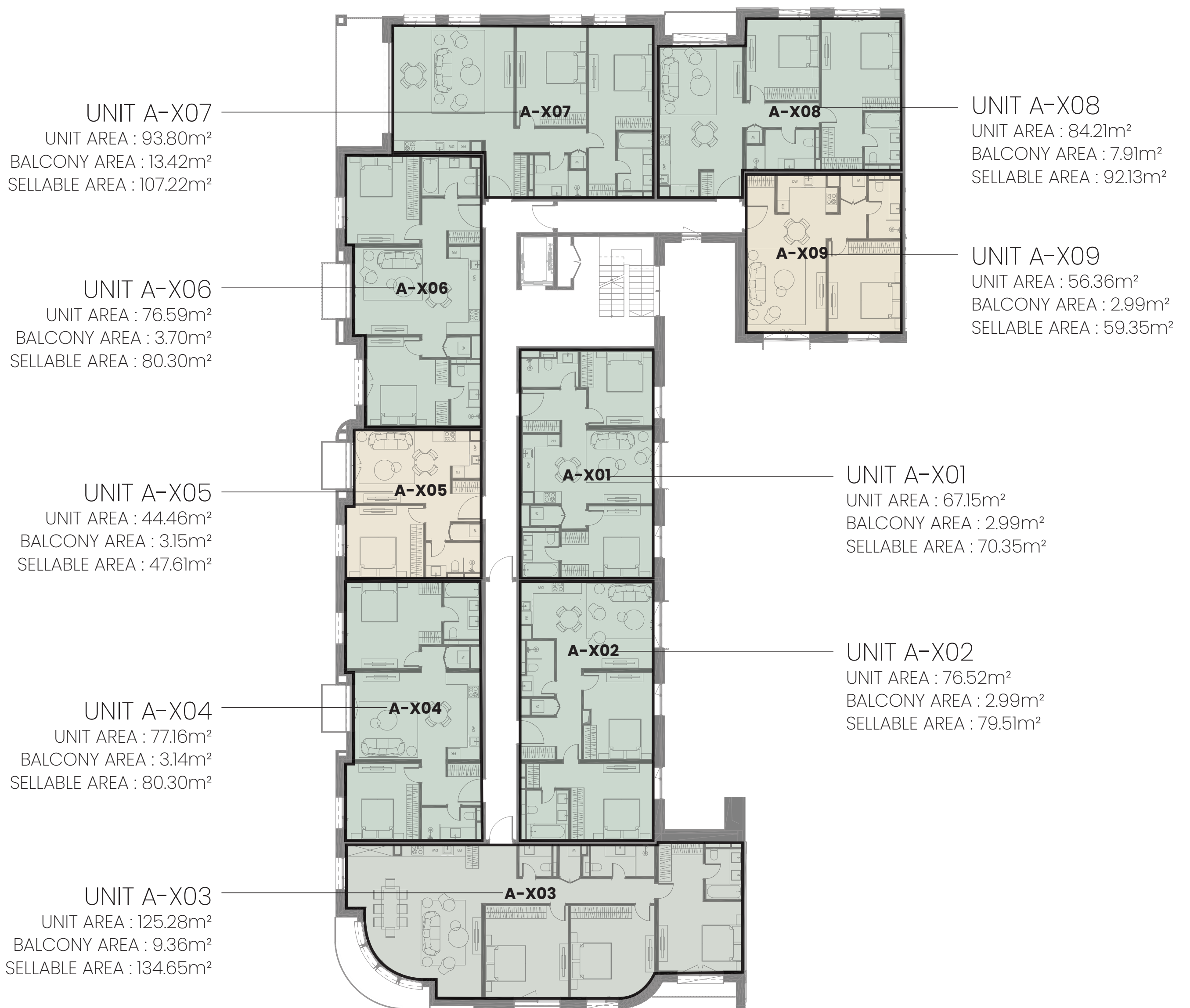
-  1 BEDROOM
-  2 BEDROOM
-  3 BEDROOM





Block A plan

Level 2-5

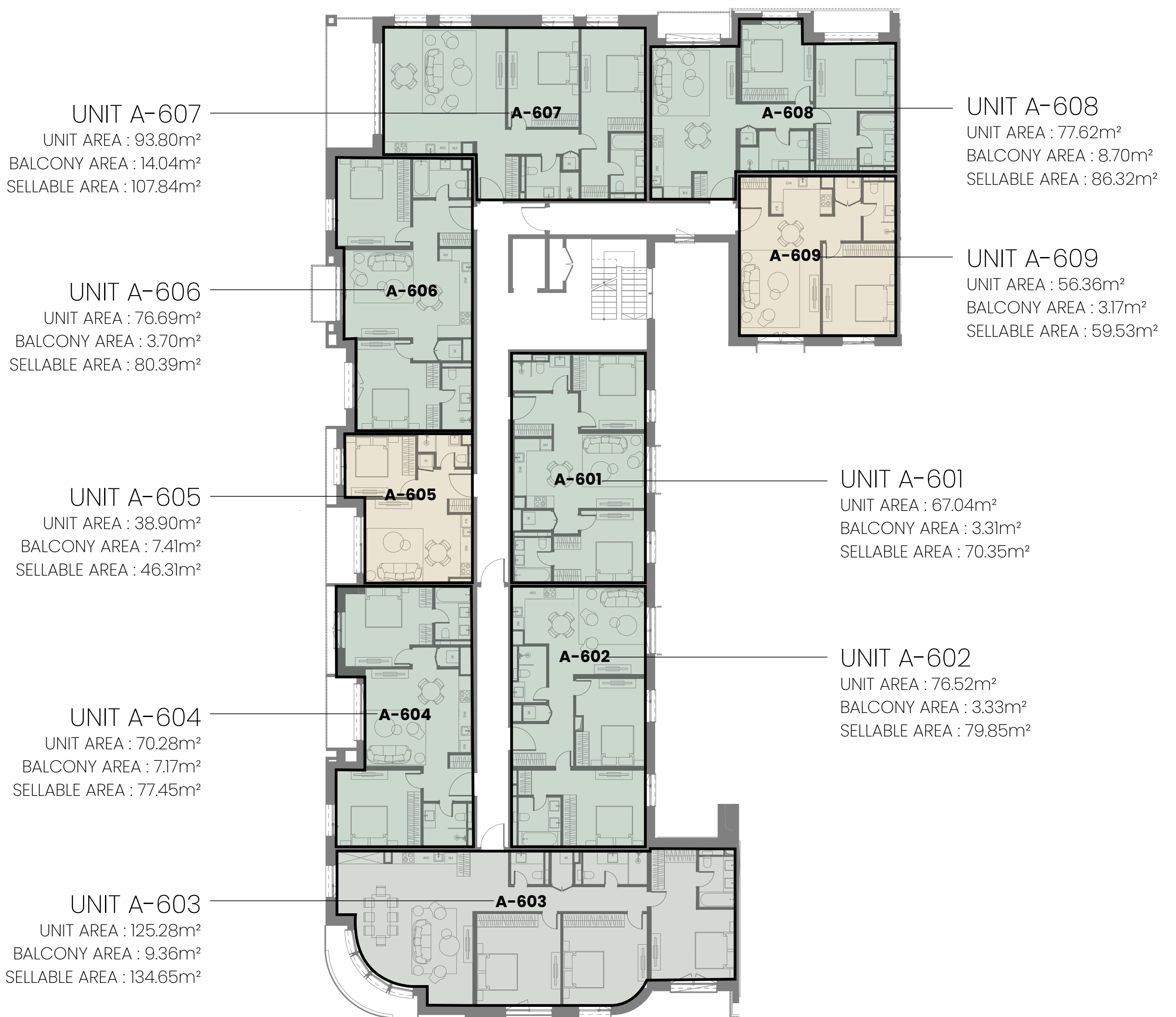


-  1 BEDROOM
-  2 BEDROOM
-  3 BEDROOM



Block A plan

Level 6



-  1 BEDROOM
-  2 BEDROOM
-  3 BEDROOM



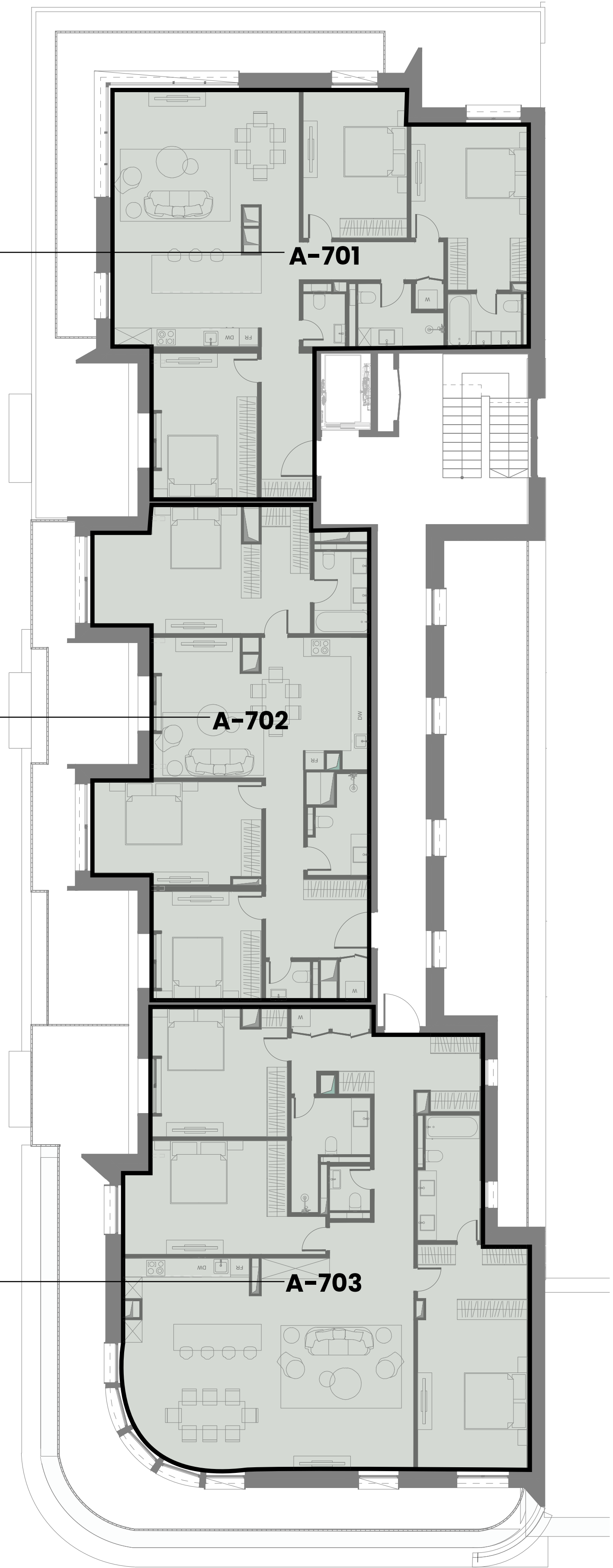
Block A plan

Level 7

UNIT A-701
UNIT AREA : 119.54m²
BALCONY AREA : 23.57m²
SELLABLE AREA : 143.11m²

UNIT A-702
UNIT AREA : 109.76m²
BALCONY AREA : 31.33m²
SELLABLE AREA : 141.09m²

UNIT A-703
UNIT AREA : 158.37m²
BALCONY AREA : 45.85m²
SELLABLE AREA : 204.22m²



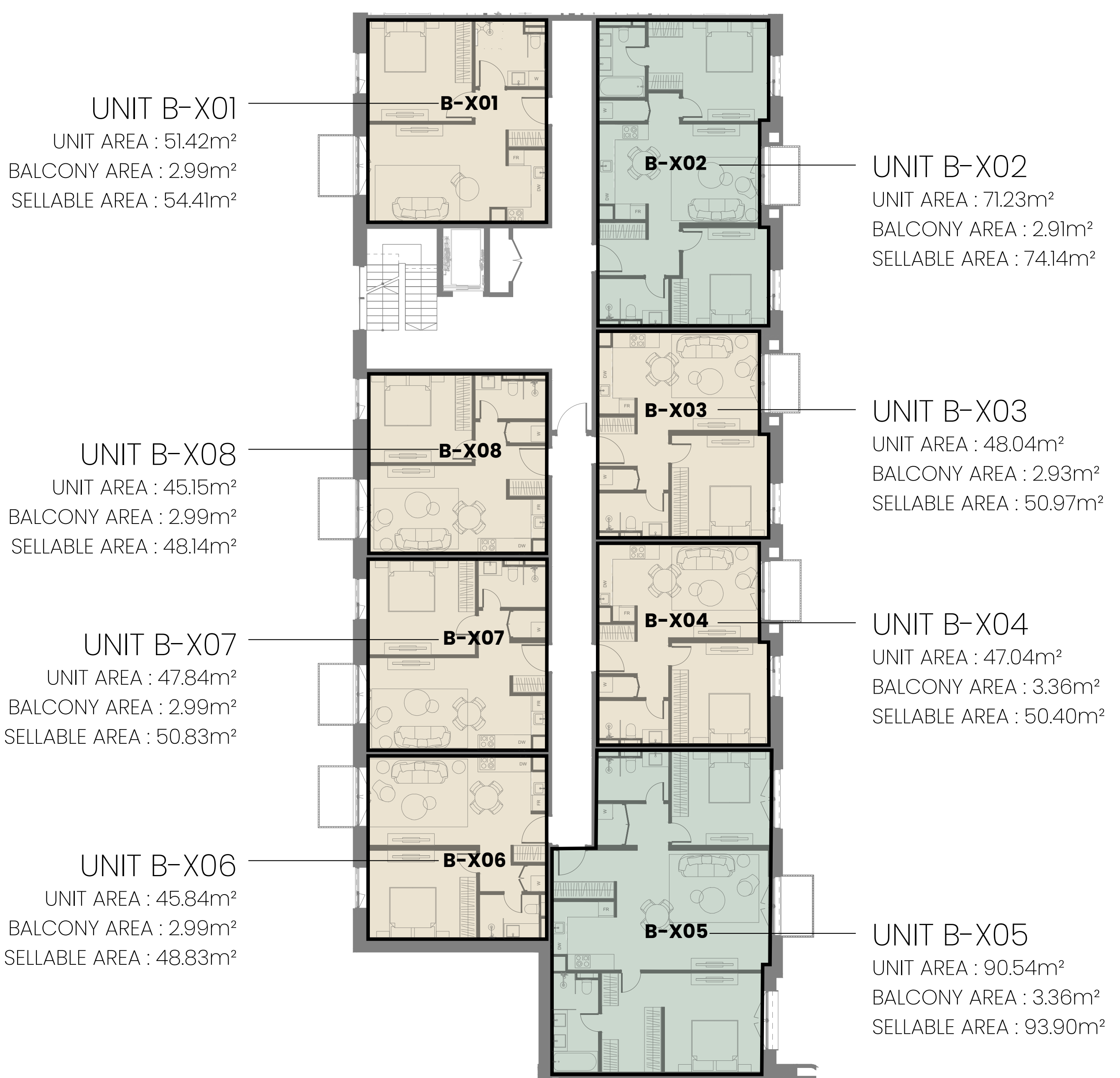
 3 BEDROOM



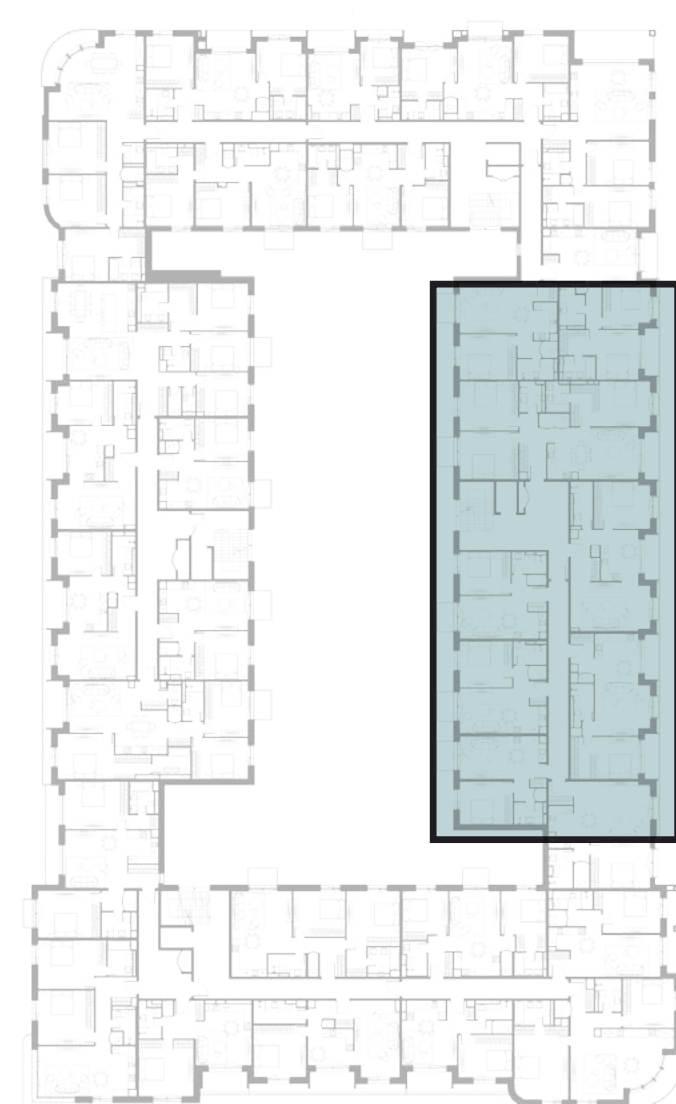


Block B plan

Level 2-5

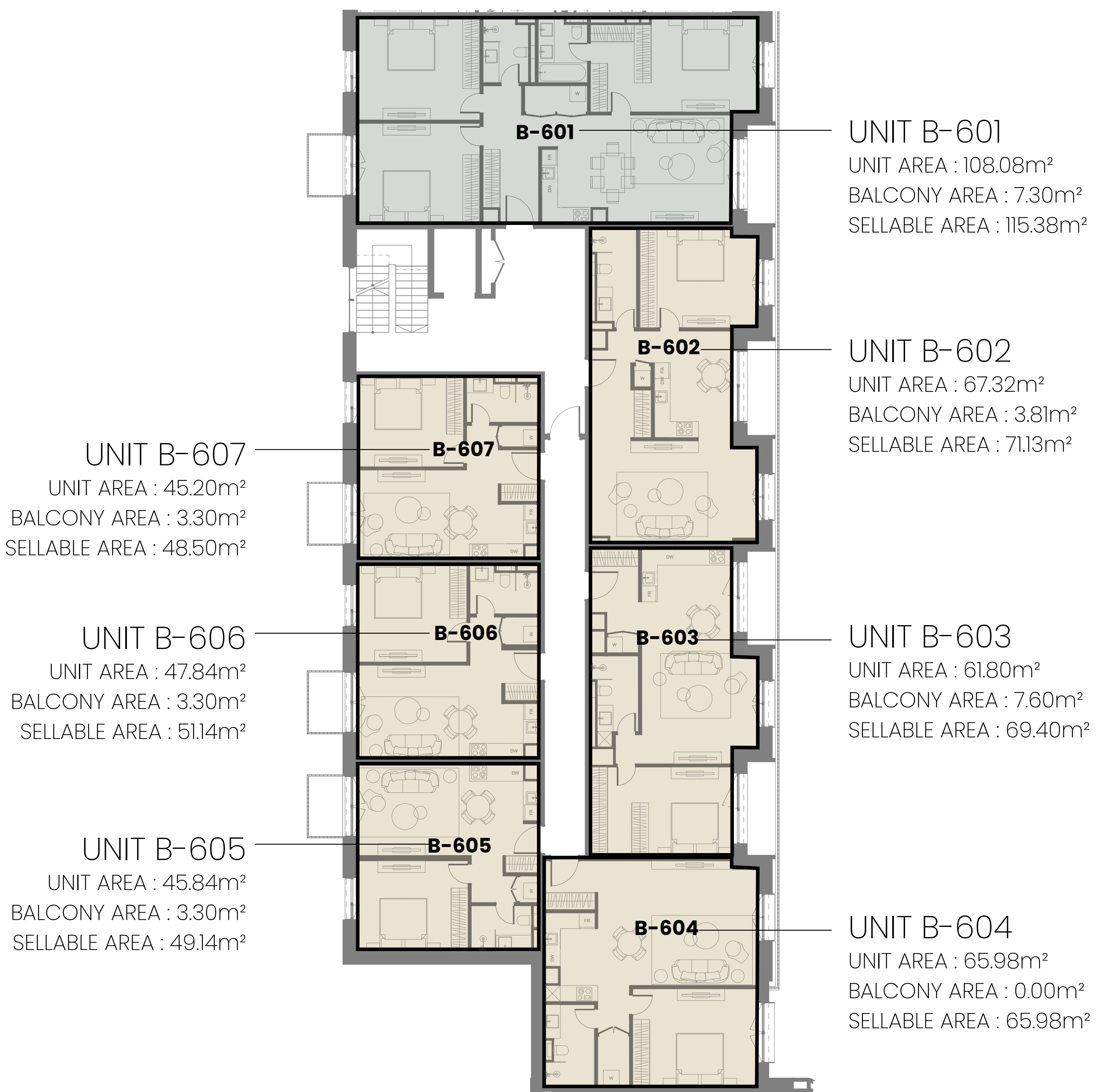




-  1 BEDROOM
-  2 BEDROOM



Block B plan

Level 6

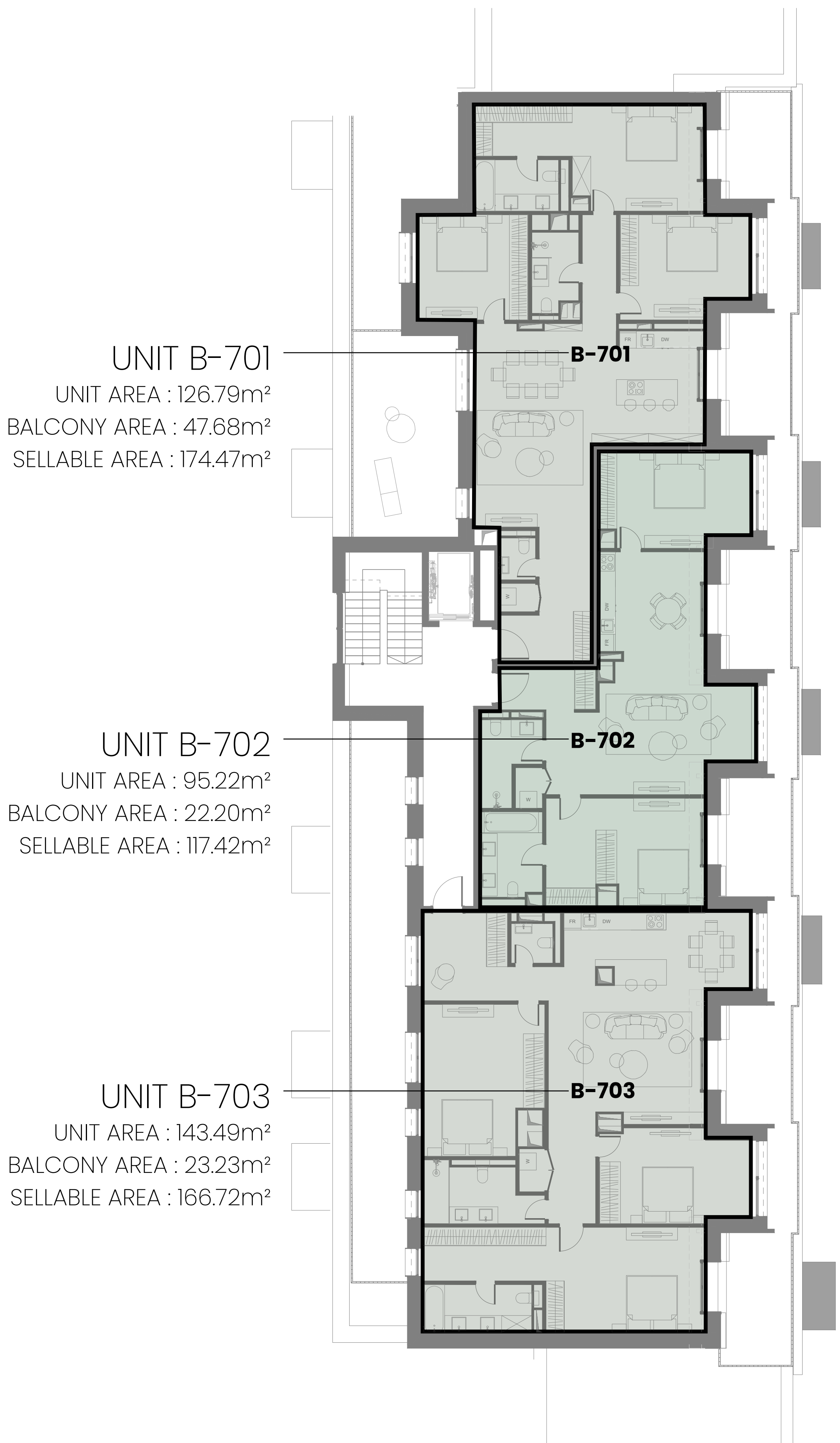




-  1 BEDROOM
-  3 BEDROOM



Block B plan

Level 7



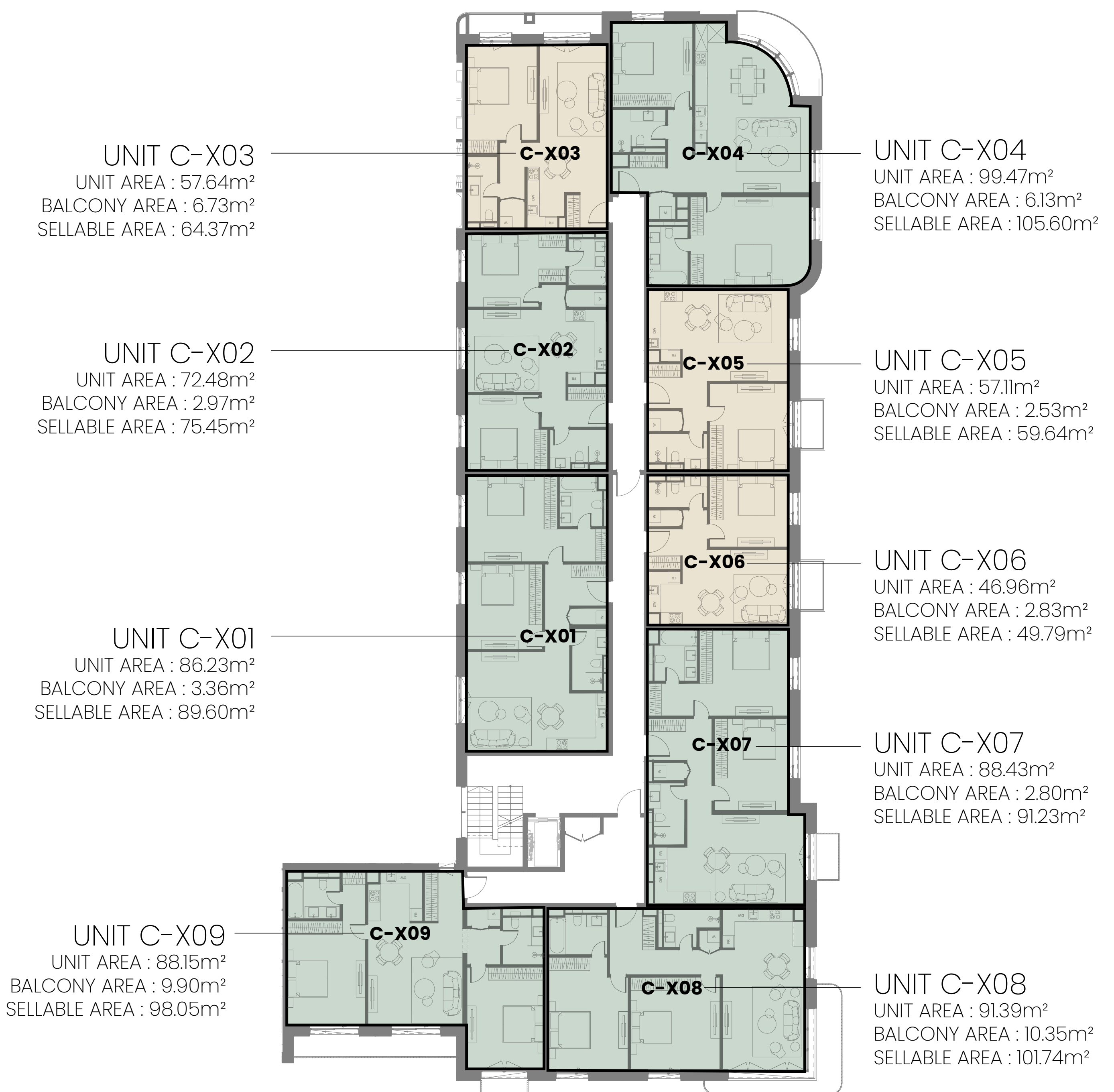
-  2 BEDROOM
-  3 BEDROOM





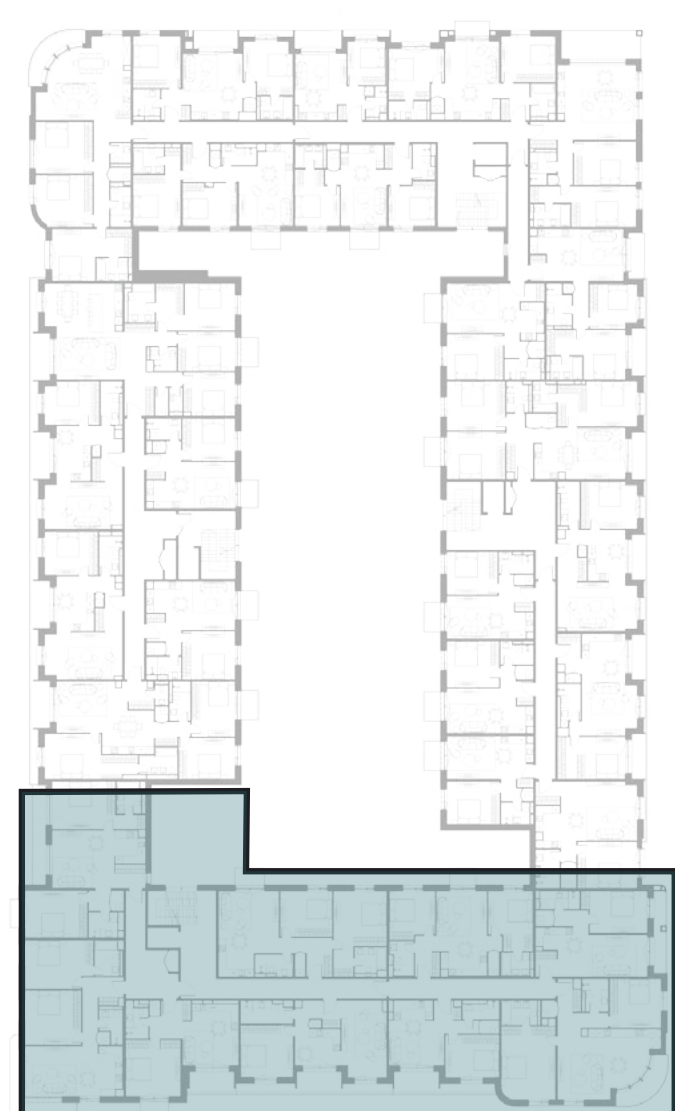


Block C plan

Level 2-5

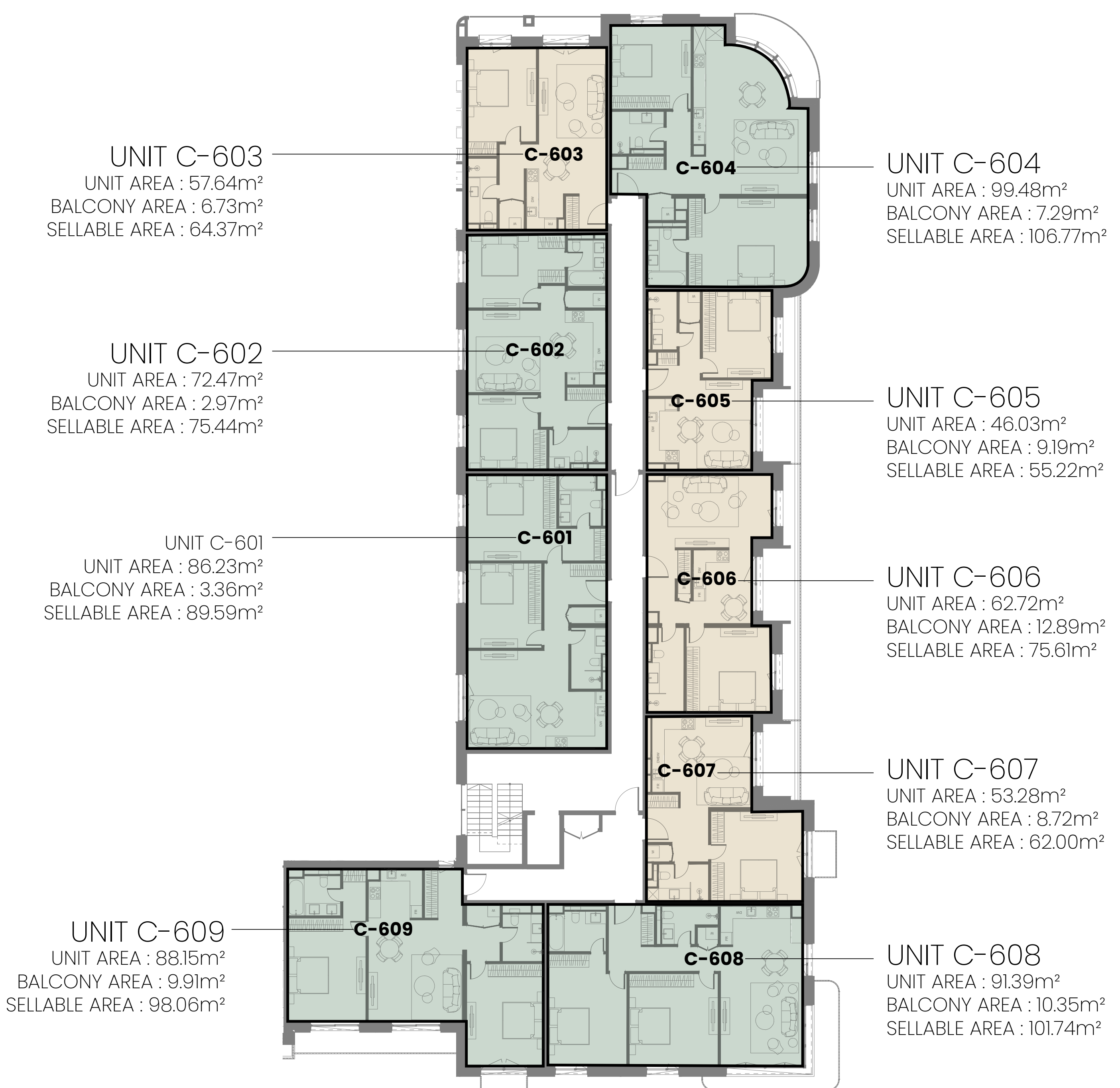


-  1 BEDROOM
-  2 BEDROOM



Block C plan

Level 6



-  1 BEDROOM
-  2 BEDROOM



Block C plan

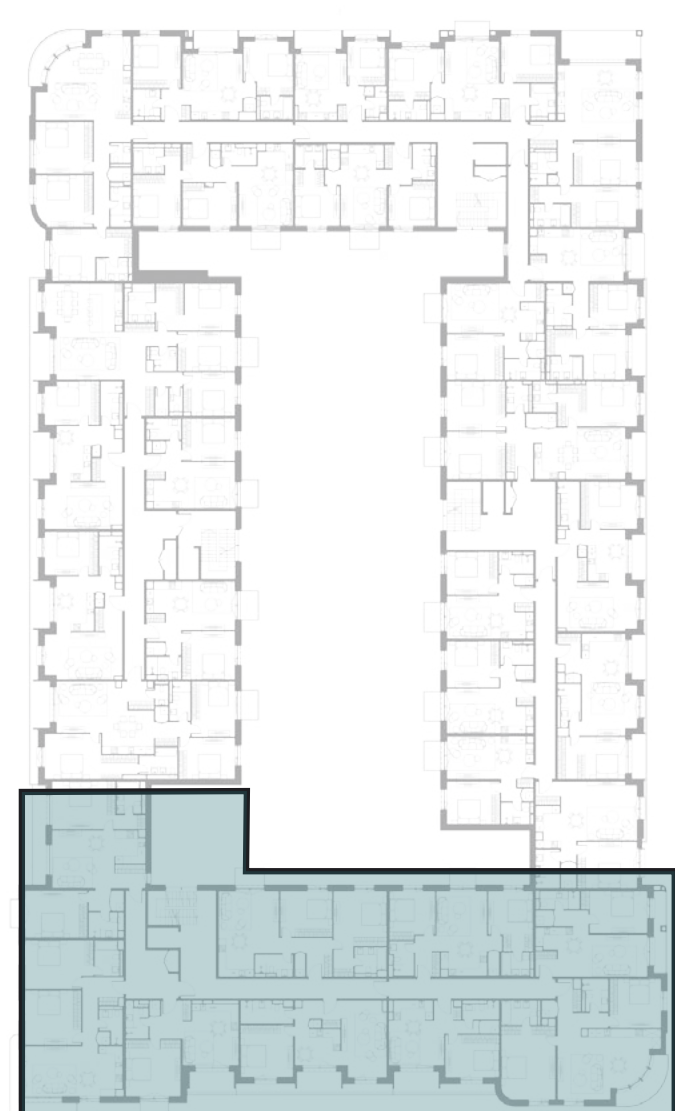
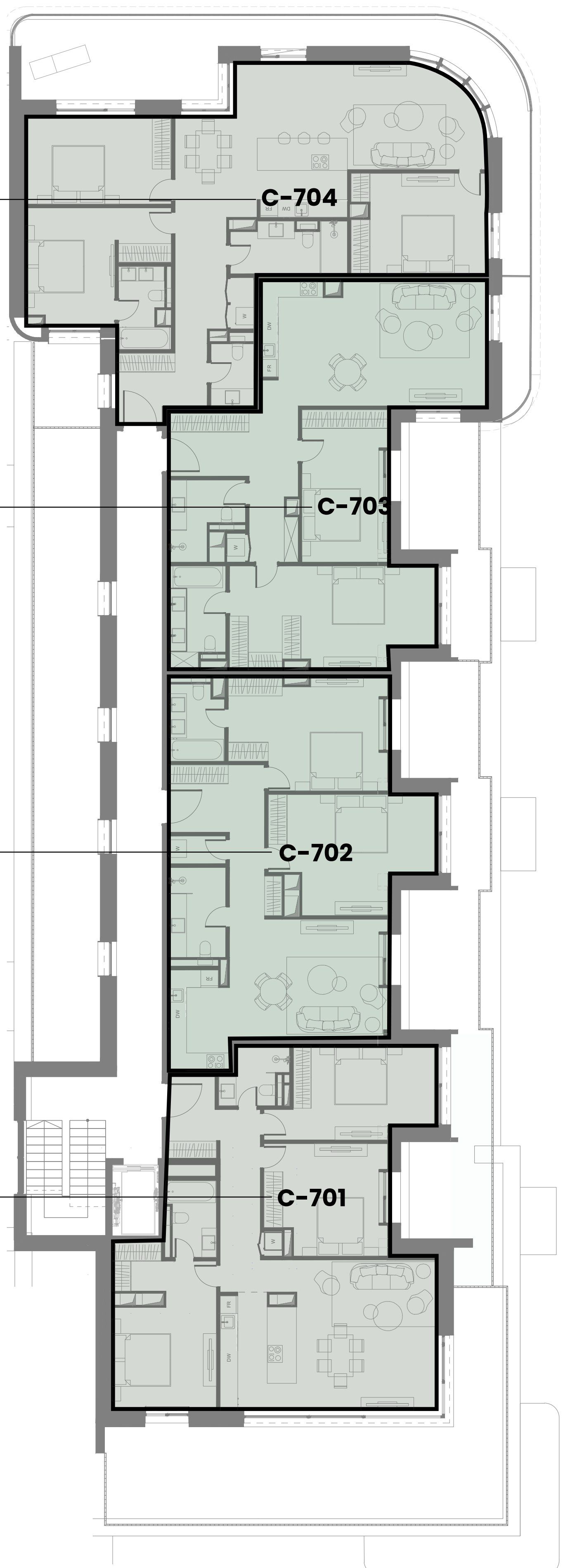
Level 7



UNIT C-704
UNIT AREA : 118.42m²
BALCONY AREA : 29.22m²
SELLABLE AREA : 147.64m²

UNIT C-703
UNIT AREA : 97.01m²
BALCONY AREA : 15.30m²
SELLABLE AREA : 112.31m²

UNIT C-702
UNIT AREA : 90.89m²
BALCONY AREA : 25.87m²
SELLABLE AREA : 116.76m²

UNIT C-701
UNIT AREA : 106.65m²
BALCONY AREA : 54.87m²
SELLABLE AREA : 161.52m²



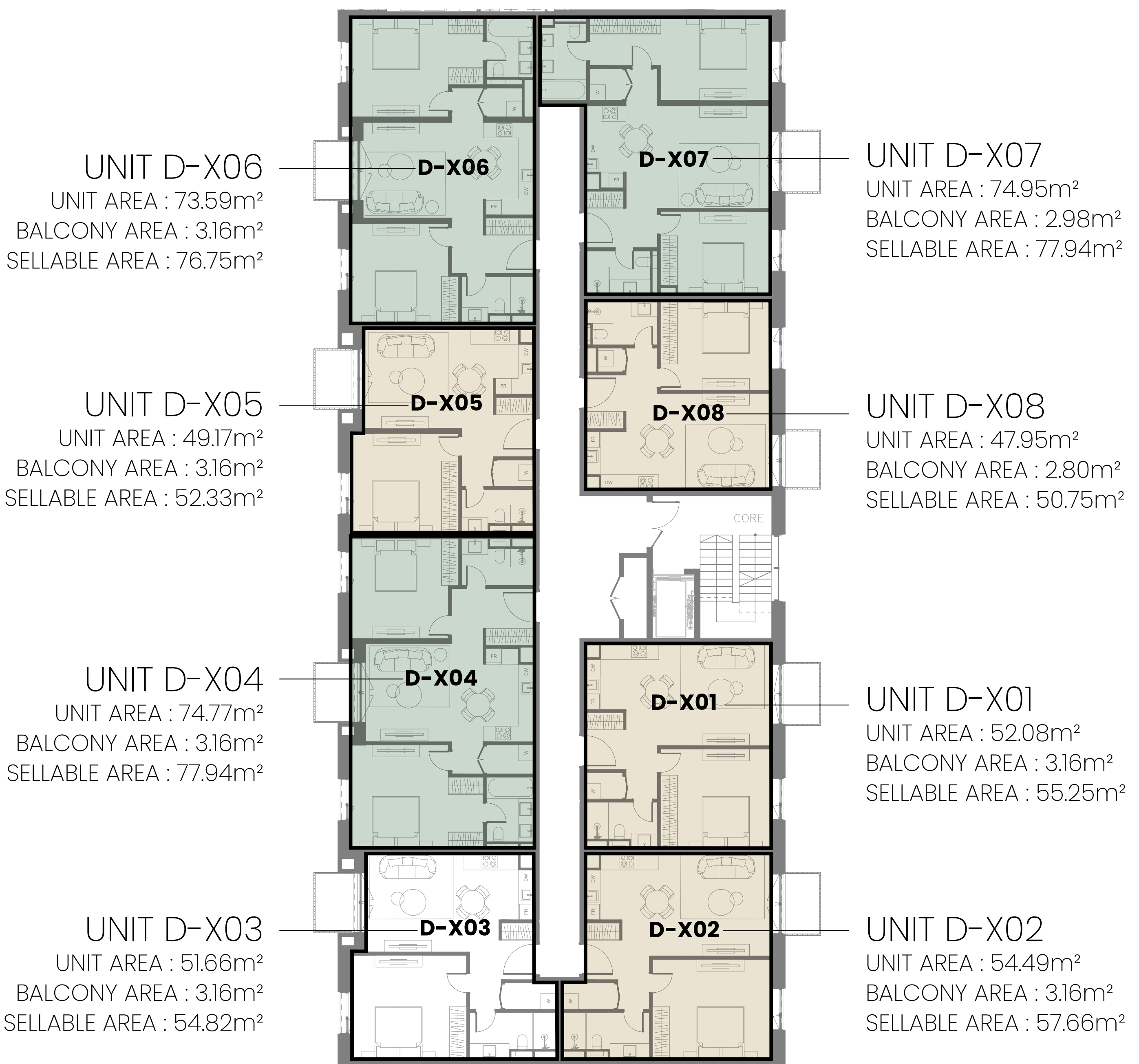
-  2 BEDROOM
-  3 BEDROOM





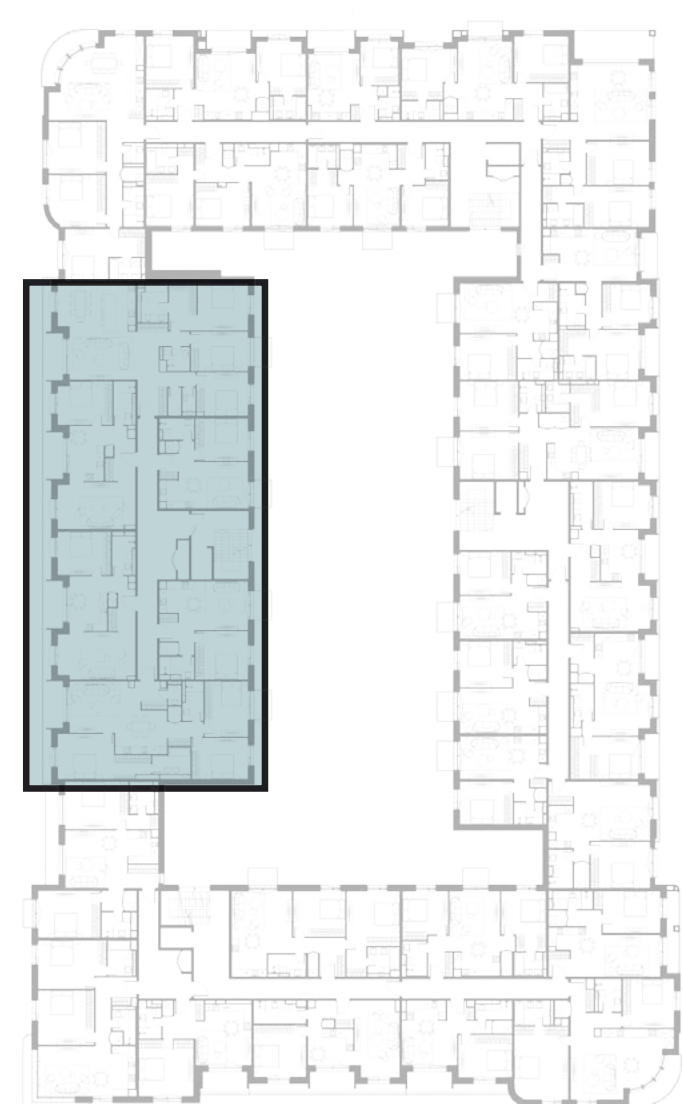


Block D plan

Level 2-5

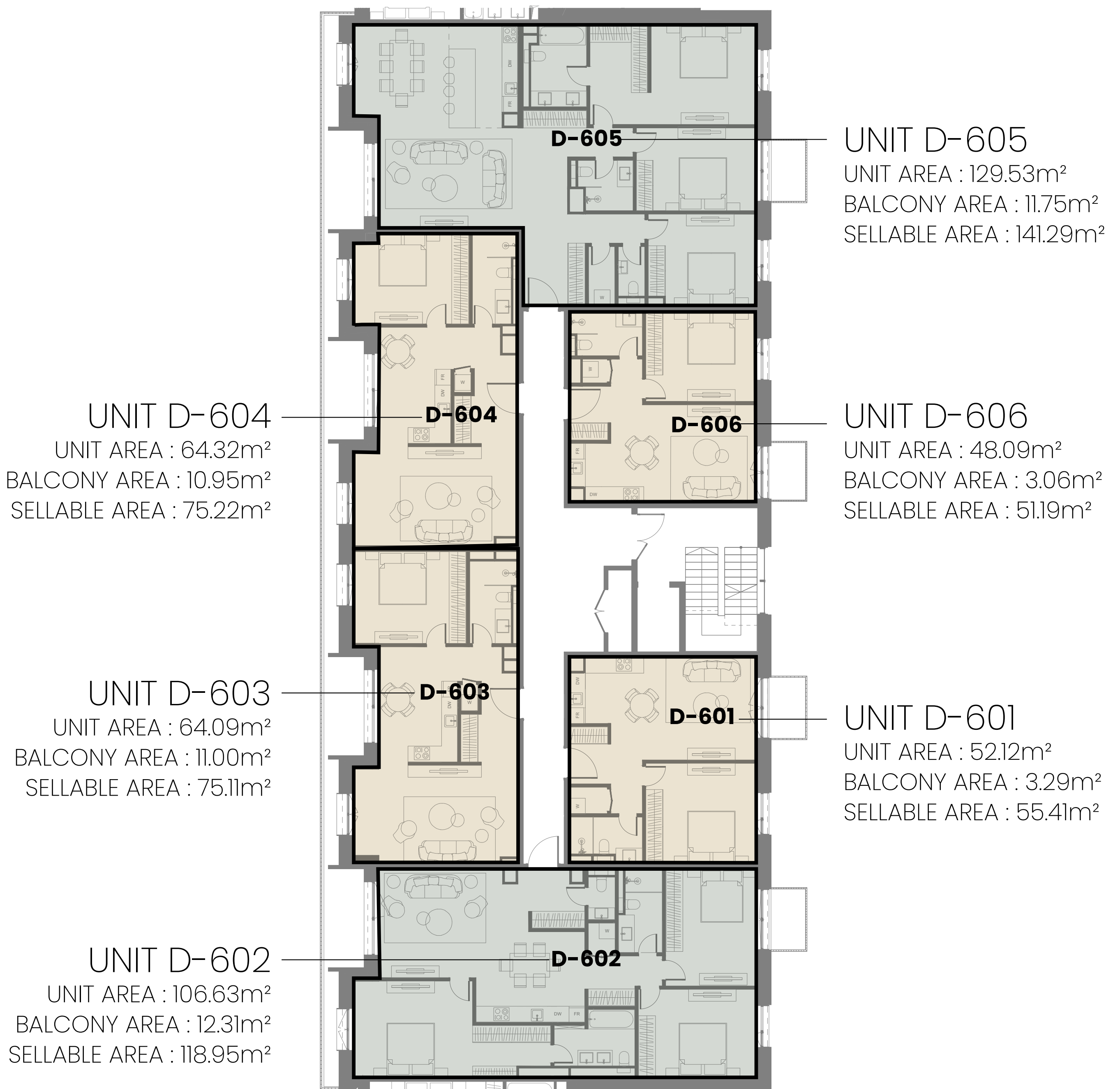




-  1 BEDROOM
-  2 BEDROOM

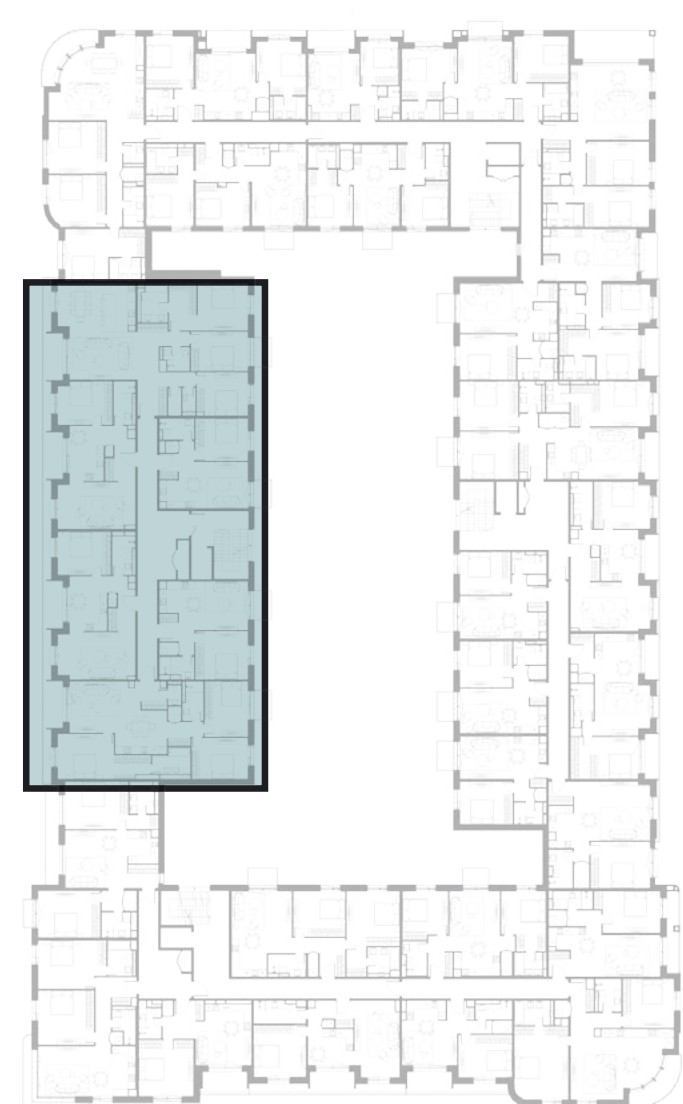


Block D plan

Level 6



-  1 BEDROOM
-  3 BEDROOM



Block D plan

Level 7

UNIT D-703

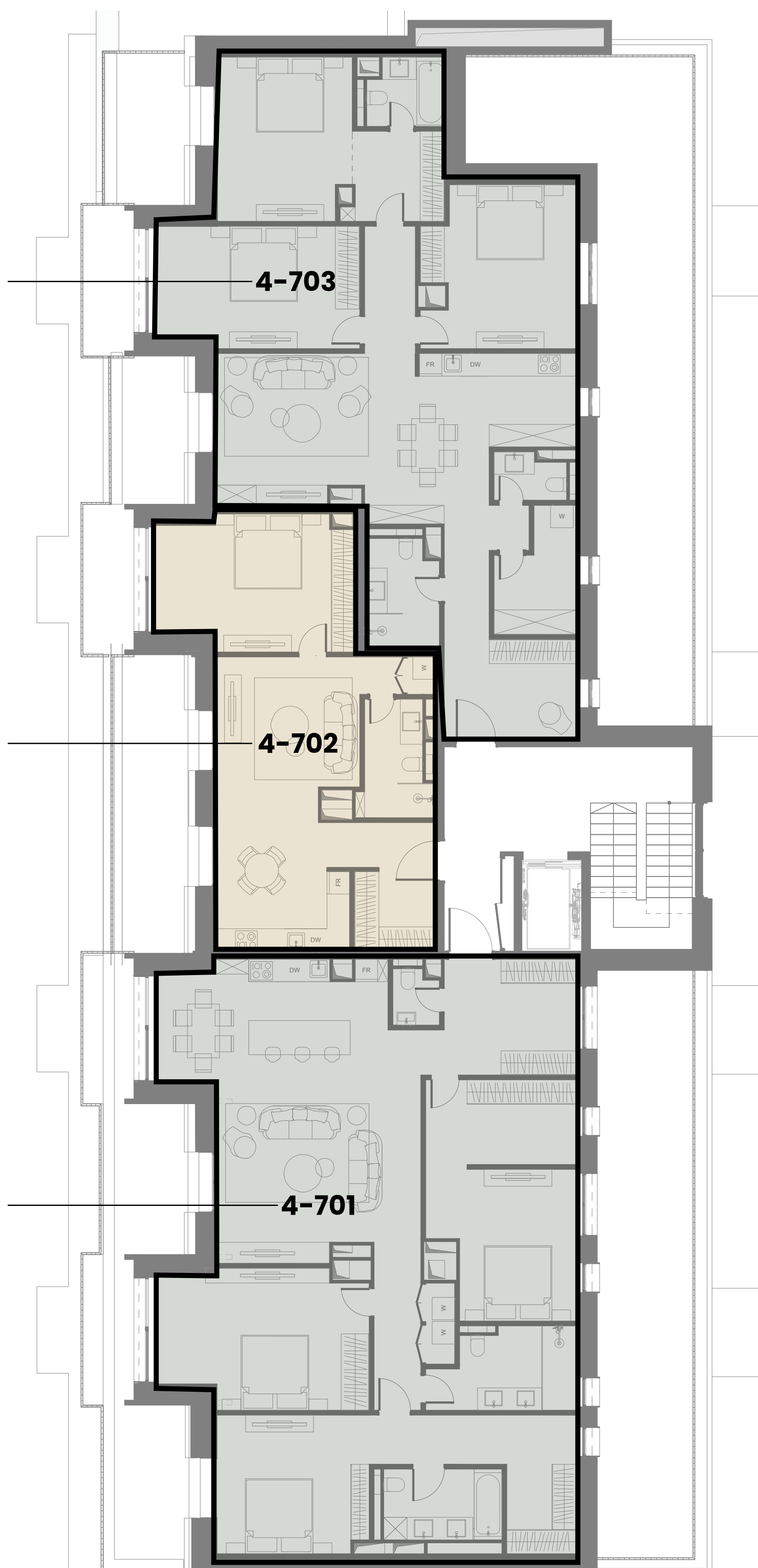
UNIT AREA : 126.27m²
BALCONY AREA : 21.76m²
SELLABLE AREA : 148.04m²

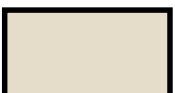

UNIT D-702

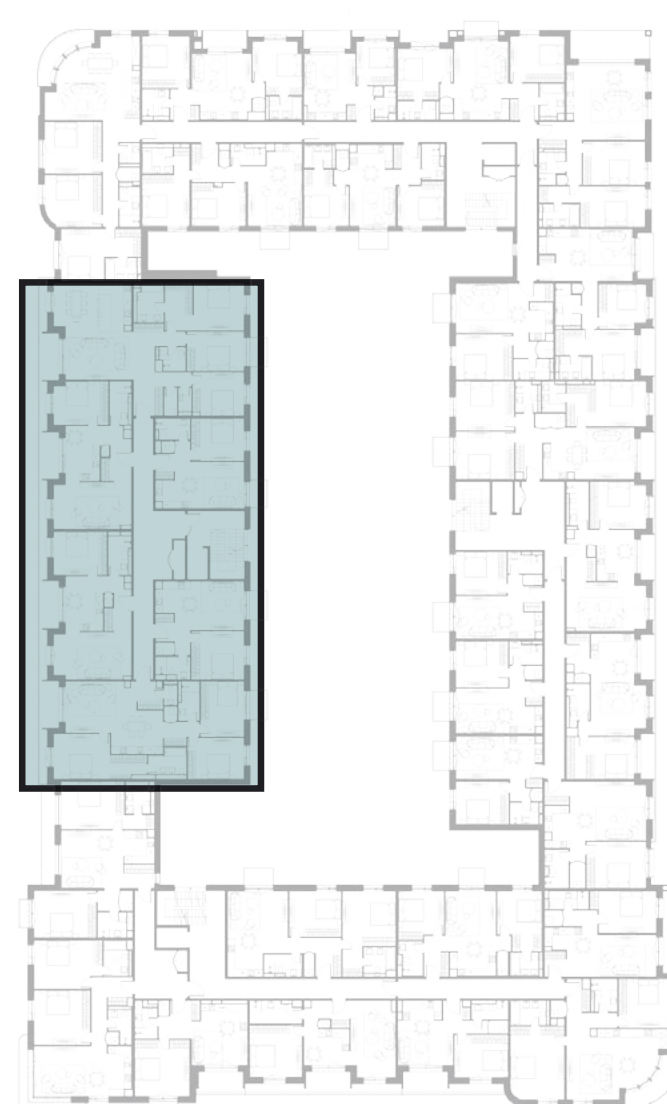
UNIT AREA: 59.37m²
BALCONY AREA : 20.57m²
SELLABLE AREA : 85.48m²

UNIT D-701

UNIT AREA : 147.16m²
BALCONY AREA : 28.19m²
SELLABLE AREA : 175.35m²



-  1 BEDROOM
-  3 BEDROOM





Toll-free: 80-88-88-88
International: +371 6-731-90-90
rigawaterfront.com

